



### Envylawn Pet Grass (ELPG)

Face Weight: 60 oz sq yd

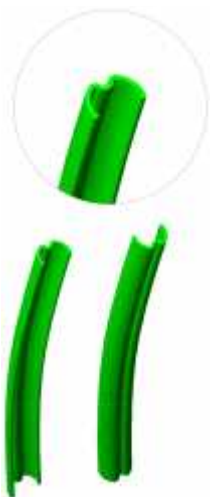
Pile Height: 1.125 inch

Color(s): Spring Green

Roll Width: 15 ft

Infill recommended: Yes\*\*

Heat reduction technology: Yes



<u>Property</u>	<u>Imperial Unit</u>	<u>Metric Unit</u>	<u>Description</u>
<b>Fiber Type</b>			100% Polyethylene
<b>Fiber Mass</b>	18800 denier 7000 denier (Root Zone)	12000 d tex 8000 d tex (Root Zone)	OMHS Monofilament TXT PE thatch
<b>Tufted Pile Height *</b>	1.125 in	31 mm	
<b>Tufted Face Weight *</b>	60 oz	2034 g/m <sup>2</sup>	
<b>Tufting Gauge</b>	3/8		
<b>Primary Backing</b>	7.0 oz/yd <sup>2</sup>	237 g/m <sup>2</sup>	Stabilized dual layered woven polypropylene
<b>Secondary Backing</b>	16 oz/yd <sup>2</sup>	543 g/m <sup>2</sup>	CUP
<b>Total Weight *</b>	83 oz/yd <sup>2</sup>	2814 g/m <sup>2</sup>	
<b>Tufted Roll Width *</b>	15 ft	4.57 m	

\* Specifications provided above are tufted measurements. Final measurements can change during backing processes  
 Challenger Industries, Inc. is not responsible to typing errors on specifications listed above  
 \*\* Deodorizer infill can be added (Zeolite mineral)

## Global Leader in Synthetic Turf

World's Most Environmentally Friendly Artificial Grass

Challenger Industries, Inc. • [www.challengerind.com](http://www.challengerind.com) • 800-334-TURF (8873)

Visit our factories at 205 Boring Drive, Dalton, GA 30721

